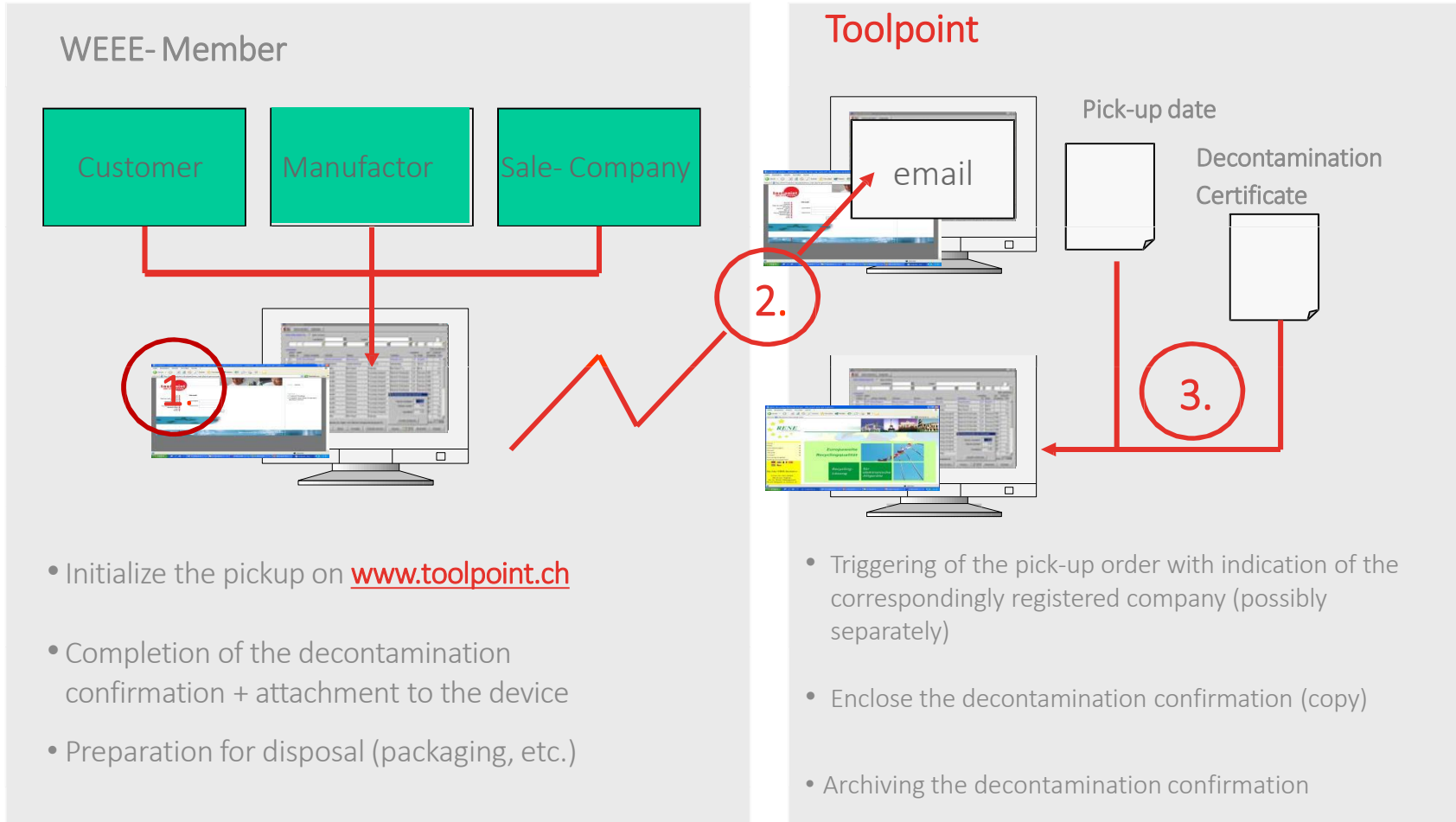


Recycling WEEE & RoHS

WEEE & RoHS process sequence
for Toolpoint industrial partners
with RENE AG



Handling Disposals: Overview



- Initialize the pickup on www.toolpoint.ch
- Completion of the decontamination confirmation + attachment to the device
- Preparation for disposal (packaging, etc.)

- Triggering of the pick-up order with indication of the correspondingly registered company (possibly separately)
- Enclose the decontamination confirmation (copy)
- Archiving the decontamination confirmation



Partner:



Kanton Zürich
Volkswirtschaftsdirektion
Amt für Wirtschaft und Arbeit



Toolpoint Website: Recycling Process

1. Information

You will find all the information about the recycling process on www.toolpoint.ch, menu item „Services / Disposal & Recycling“



Toolpoint Website: Recycling Order

2. Recycling Order/ Order notification

Please send your order with all the details below to janet.waespi@toolpoint.ch.

- Company
- Location
- Object
- Weight
- Dimension (L x W x H)
- Pick Up Address
- Billing Address
- Additional Remarks
- Pick Up Date
- Contact
- Name
- Phone
- Email

Decontamination: Responsibility

3. Decontamination

Important: the equipment has to be decontaminated for the transport



Disposal & Recycling

Waste Management & Recycling

Toolpoint takes its responsibilities towards people and the environment seriously. To facilitate environmentally friendly disposal of equipment and consumables, Toolpoint offers its members a disposal service throughout Europe via a specially established disposal and recycling process that complies with Directive 2002/96/EC. This directive requires disposal by the distributor of equipment that has certain classifications.

The Toolpoint recycling process step by step:

- Complete and send the notification form.
- Decontaminate equipment for transport.
- Complete the decontamination form, ensure the service technician has signed the form, and send a copy to Toolpoint.
- Preparation for disposal (packaging etc.).
- Collection of the equipment by Toolpoint partners.

Certificate of surface decontamination



Certificate of Surface Decontamination

Osvědčení o povrchové dekontaminaci
 Certificat de Décontamination de Surface
 Zertifikat Oberflächenreinigung
 Certificato di decontaminazione superficiale
 Certificaat van Oppervlakte Reiniging
 Intyg om Ytrensning

EN - This certificate serves as a pre-condition for the collection of medical devices which are falling under WEEE category 8 in accordance with Directive 2002/96/EC.
CZ - Tento certifikát slouží jako předěžná podmínka pro výběr zdravotnických prostředků, které jsou OEEZ spadající do kategorie 8 v souladu se směrnicí 2002/96/ES.
DE - Dieses Zertifikat dient als Voraussetzung für die Abholung von Medizinprodukten, die unter die Kategorie 8 des Elektrogerätegesetzes fallen in Übereinstimmung mit der Richtlinie 2002/96/EG.
FR - Ce certificat sert de condition préalable pour la collecte des dispositifs médicaux qui relèvent de la catégorie 8 des déchets d'équipements électriques et électroniques (DEEE) conformément à la directive 2002/96/CE.
IT - Questo certificato è necessario per affermare la corretta condizione per la raccolta di dispositivi medici che rientrano nella Categoria 8 RAEE in conformità della direttiva 2002/96/CE.
NL - Dit certificaat dient als een voorwaarde voor het verzamelen van medische apparatuur onder de WEEE categorie 8 overeenkomstig met Richtlijn 2002/96/EC.
SE - Detta intyg fungerar som en information för insamling av medicintekniska produkter som omfattas av WEEE kategori 8 i enlighet med direktiv 2002/96/EG.
EN - A collection of medical devices can only be proceeded on the basis of a correctly filled in document.
CZ - Soubor zdravotnických prostředků může být zpracována pouze na základě řádně vyplněného dokumentu.
DE - Die Abholung der Medizinprodukte kann nur weiter bearbeitet werden auf der Grundlage eines ordnungsgemäß ausgefüllten Dokumentes.
FR - La collecte de dispositifs médicaux ne peut être effectuée que si le document est correctement rempli.
IT - Il ritiro di dispositivi medici può essere effettuato solo con modulo debitamente compilato.
NL - De inzameling van een medische apparaten kan enkel geschieden op basis van een volledig en correct invuld document.
SE - En insamling av medicintekniska produkter kan endast göras på grundval av en korrekt ifyllt dokument.

© RENE 2010



Partner:



Kanton Zürich
 Volkswirtschaftsdirektion
 Amt für Wirtschaft und Arbeit



Packaging / Preperation pickup

Packaging

- Devices over 30 kg on Europalette
- Devices under 30 kg can be provided in a cardboard box / plastic container

Preparation pickup

- Pallet, cardboard box or plastic container for collection
- Mark the signed decontamination form on the device



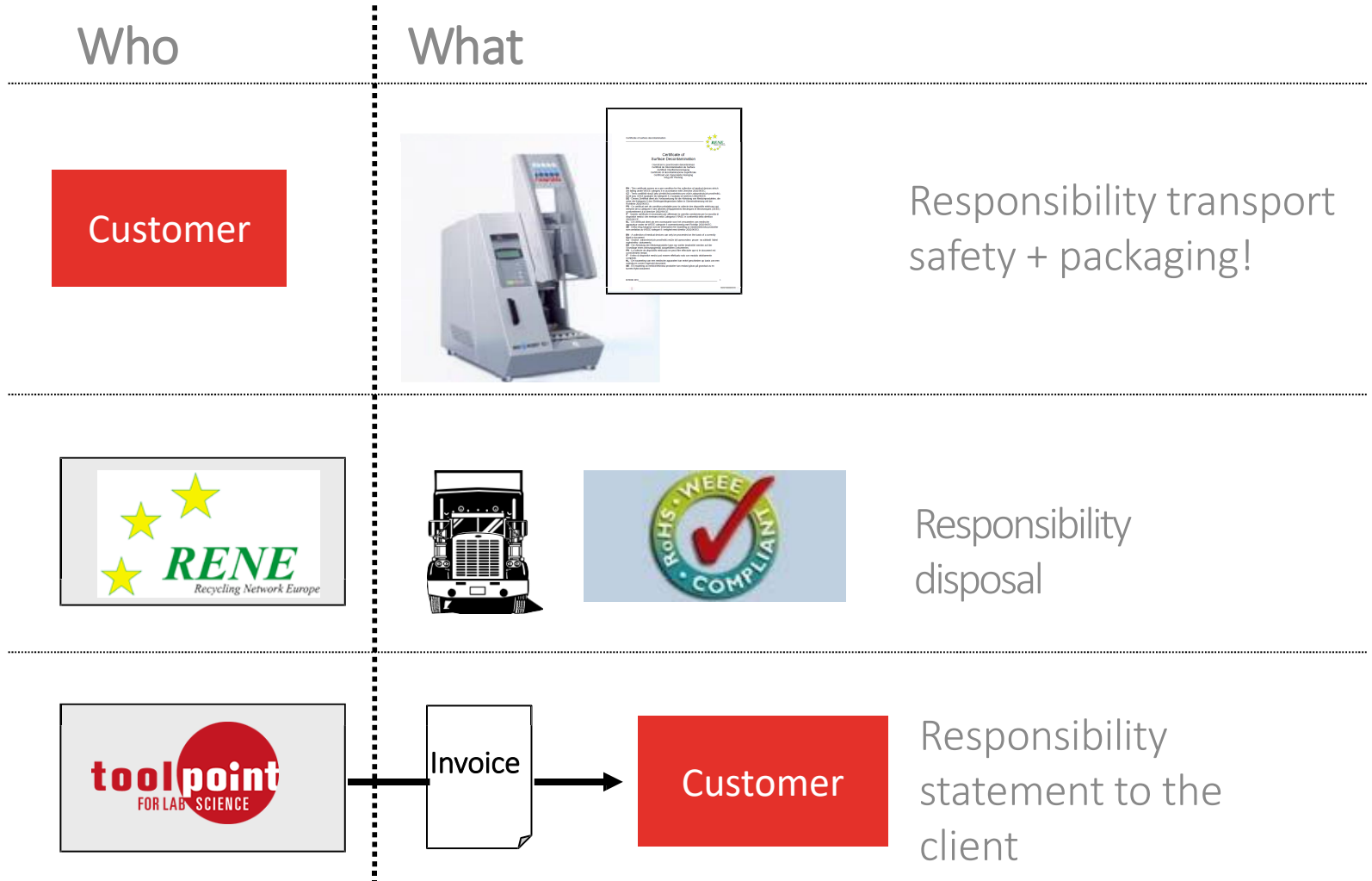
Partner:



Kanton Zürich
Volkswirtschaftsdirektion
Amt für Wirtschaft und Arbeit



Process



Partner:



Kanton Zürich
Volkswirtschaftsdirektion
Amt für Wirtschaft und Arbeit

